

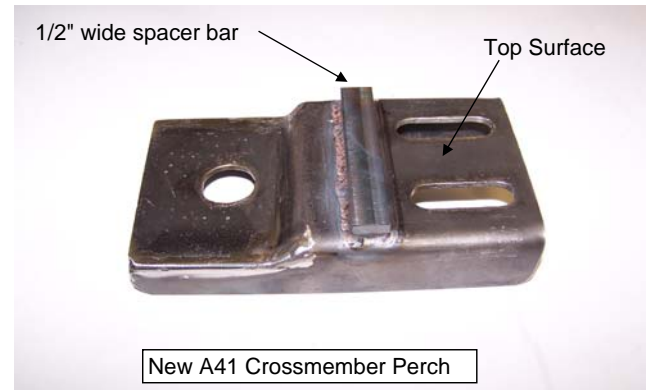
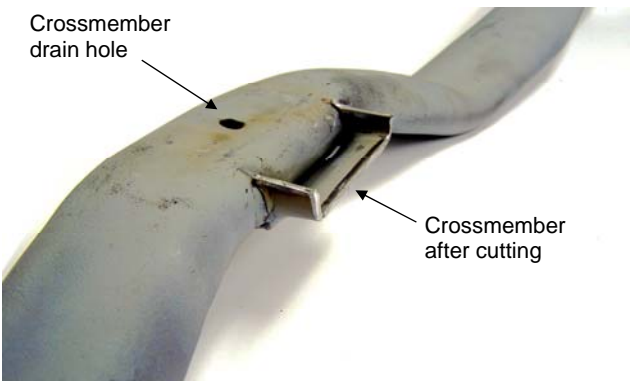
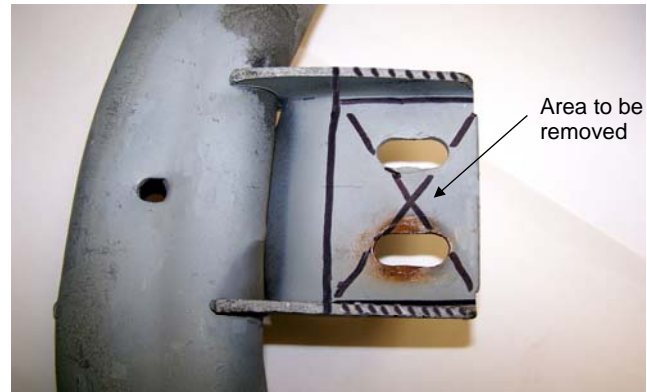
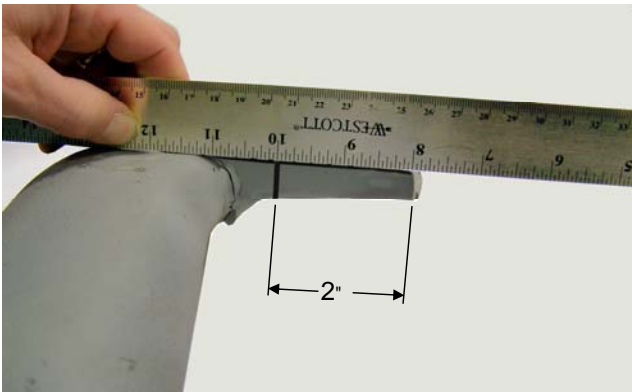
SILVER SPORT

Transmissions

Special A41 Crossmember Rework for 1968-1972 Chevelle

The A41 installation requires modification to the original crossmember to provide additional height needed for attaining the correct driveline angle.

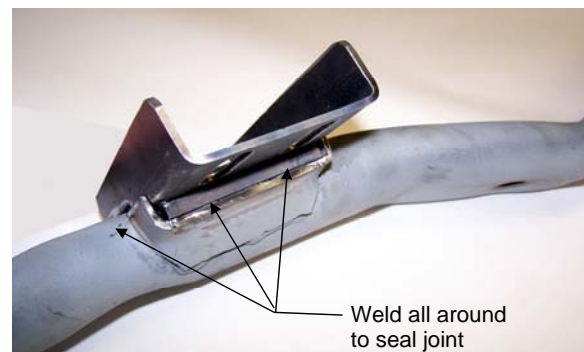
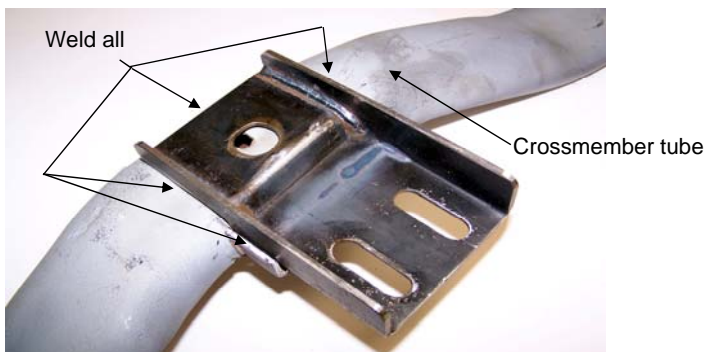
Remove crossmember and place on work surface with bottom side facing UP.
Measure 2" back from front edge and mark for cutting.



Place New A41 crossmember perch on crossmember as shown with the 1/2" wide spacer bar resting on the remaining perch from the original part. The new perch should lay flat on bottom surface of crossmember tube. Original crossmember perch may require slight rework to allow the new A41 perch to sit flat.

If any doubt with new perch fit, simply tack new perch in place to verify installation in car before completing the full weld.

Weld the new perch in place all around as shown. Be sure to weld all around the 1/2" wide bar to seal the joint. Do NOT weld the original crossmember drain hole closed.



Paint or finish the completed crossmember to suit.